

**GRADE 11 ESSENTIAL – UNIT F**  
**TABLES AND GRAPHS FOR LINEAR EQUATIONS**

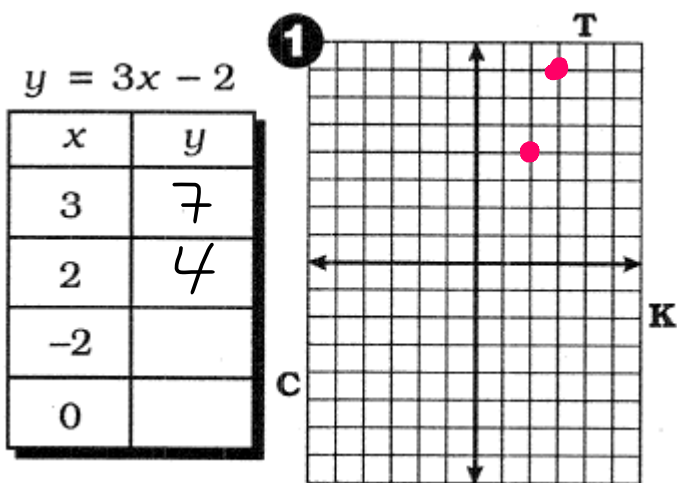
Name: \_\_\_\_\_

Date: \_\_\_\_\_

## How Does the Average Man Feel Today?

Complete the table of solutions for each equation. Graph the solutions and draw a line through them. If extended, the line will cross a letter. Write this letter in each box containing the exercise number.

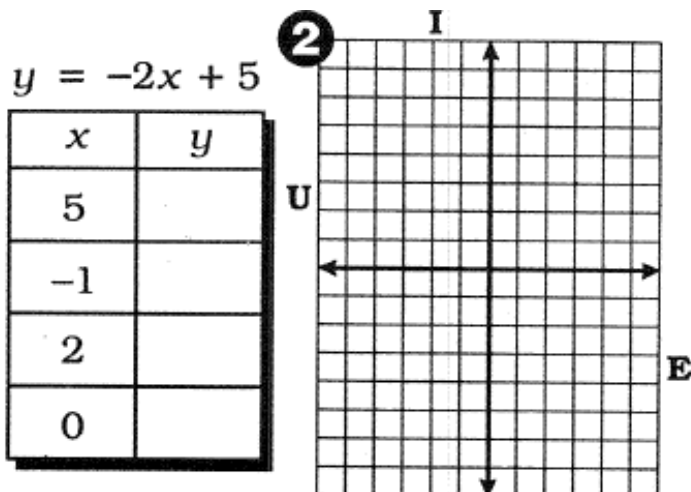
6	2	1	8	8	2	4	8	3	7	5	4
---	---	---	---	---	---	---	---	---	---	---	---



Evaluate:

$$3 \cdot (3) - 2 = 7$$

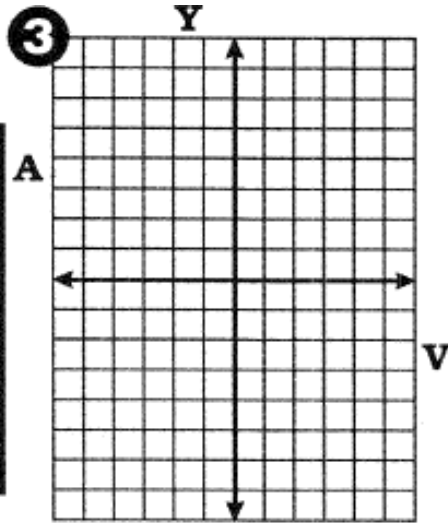
$$3 \cdot (2) - 2 = 4$$



Show work!

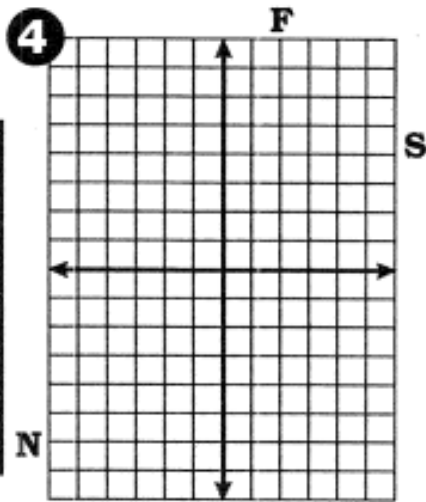
$$y = -x - 3$$

$x$	$y$
4	
-1	
-6	
0	



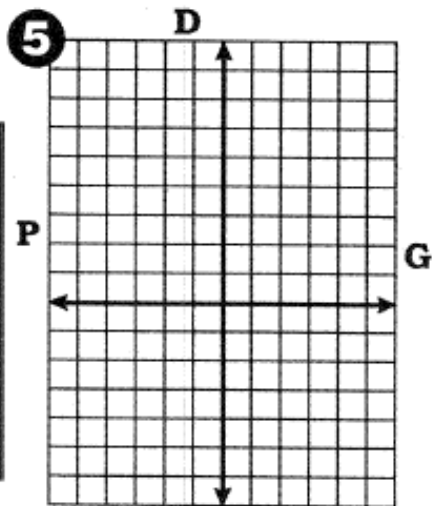
$$y = \frac{1}{2}x + 1$$

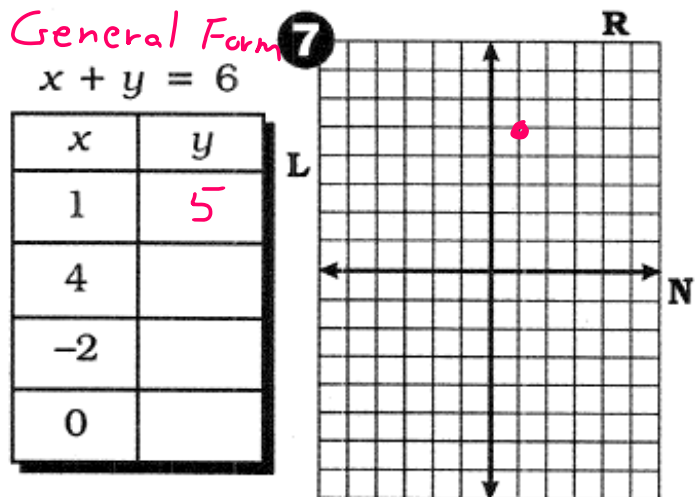
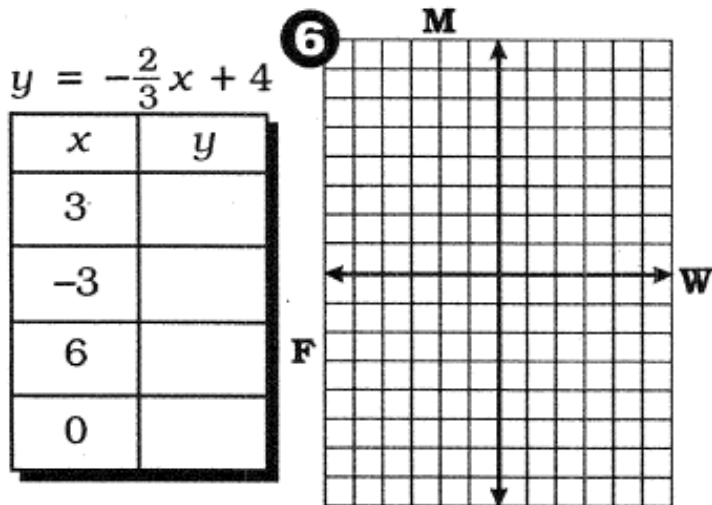
$x$	$y$
4	
-6	
-2	
0	



$$y = 7 - 2x$$

$x$	$y$
2	
-1	
5	
0	





"General Form" Egn

$$1 + y = 6 ; y = 5$$

