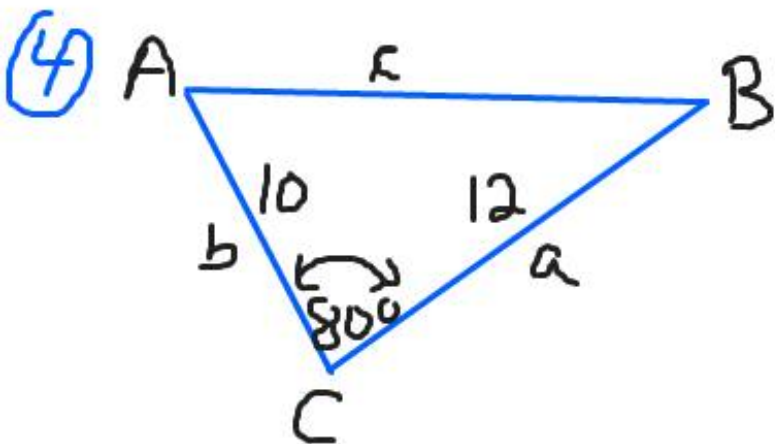


- For the regular 10-sided decagon determine:
- the sum of all the interior angles
  - the measure of the angle alpha ;  $\alpha$
  - the number of diagonals that would cut across the decagon
  - the value of the central angle that each side 'subtends'  $\phi$  "phi"

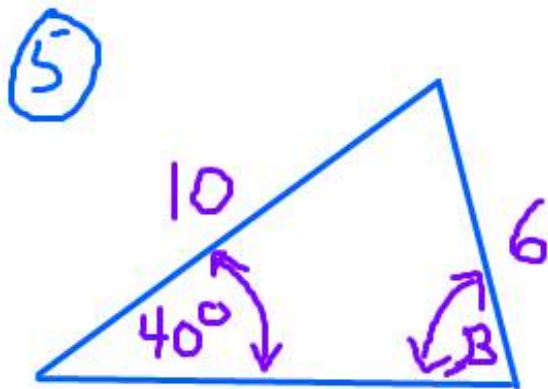
② If 3 gronks equals 4 prinkles, and 1 prinkle equals 8 nuggies, then how many nuggies are there for 10 gronks.

③ You are going on a road trip for 4,000 km. Your cars fuel economy is 8L / 100 km. Gas costs \$1.20 per litre. Determine how much the gas will cost for the road trip.



Determine Side c

Determine Angle B



Determine angle 'Beta'  $\beta$

There are actually two answers!

⑥

Your boss asks you to connect three boards together. He gives you two boards that have length 6 ft 8 in plus or minus 2 inches and a third board he says is 4 feet give or take 1 inch. When you connect the boards together how long are the connected boards ?

+/-  $\equiv$  give or take