

GRADE 10 Essential
WEEK 5 QUICK REVIEW

Name: _____

Date: _____

**Just a quick review, selected questions from other quizzes,
worksheets, etc.**

Should take max 40 mins

You are always given conversions, formulae..

You are expected to have your own cheat sheet too

PART 1 - MULTIPLE CHOICE

Circle the letter of the best or closest answer.

Guess if necessary

Each question is worth two marks.

(Be strategic! Eliminate the bad answer(s), back-solve (guess and check) the reasonable answers, use common sense,)

1. The Canada Pension Plan (**CPP**):
 - a. is a contributory plan to which workers pay a portion of their employment income;
 - b. is a defined benefit financial plan that lets you relax in luxury when you retire;
 - c. is a voluntary plan that can be declined using a T7B tax form;
 - d. has been enjoyed by our progressive society for almost 100 years now.

2. An example of a deduction from employment income is:
- CPP benefit
 - CCB (Canada Child Care benefit)
 - gratuities and commissions
 - EI contributions
3. If Jayson goes to work at 09:15 and leaves work at 15:00 and has an unpaid 30 minute lunch break; for what duration of time does he get paid?
- 8 hours
 - 5 hours 15 minutes
 - 15 hours
 - 6 hours 45 minutes
4. 3700 grams is equivalent to _____ kg
- 3.7 kg
 - 37 kg
 - 3.7 mg
 - 0.0037 kg
5. Which of one these is NOT a possible pay deduction?
- Canada Pension Plan (CPP) contributions
 - Canada Child Benefit (CCB)
 - Employment Insurance (EI) contributions
 - Charity contributions
6. 1.7 metres is the equivalent of:
- 170 cm
 - 170 mm
 - 5.18 ft
 - 55.76 ft

7. A handful of grapes might weigh:

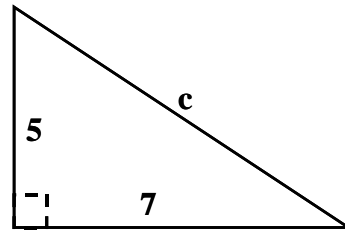
- a. \$1.25 b. 10 grams
c. 12 litres d. $\frac{3}{4}$ ^{ths} of a Bohemian gronk

8. $1\frac{1}{4} + 2\frac{3}{8} =$

- a. 4.75 b. $3\frac{5}{8}$ c. $3\frac{4}{12}$ d. $3\frac{1}{3}$ when properly reduced

9. The length of side c is:

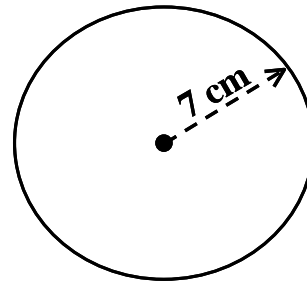
- a. 12 units
b. 6 units
c. 74 units
d. 8.6 units



****Not to scale****

10. The circumference of the circle is:

- a. **22 cm**
b. **154 cm²**
c. **44 cm**
d. **$7^2/\pi$ mm**



11. 52 inches is how many feet and inches?

- a. 3 feet 14 inches b. 4 feet 10 inches
c. 4.3 feet d. 4' 4"

12. 4.95% of \$630 is:

- a. \$31.19 b. \$634.95 c. non-taxable d. \$3118.50

13. Evaluate: $6 + 3^2 - 4$

- a. 77 b. 5 c. $\sqrt{(6-4)}$ d. 11

14. Two of what number **multiplied** together gives you 81?

- a. 9 b. 6561 c. 3 d. 40.5

15. A rectangle has a width of 10 cm. The length of the rectangle is twice as long as the width. What is the outside measure of the **perimeter** of the rectangle?

- a. 30 cm b. 200 cm² c. 40 cm d. 60 cm

16. If Karen earns a regular wage of \$12.55 per hour and gets a 4% pay raise (*ie*: an extra 4% raise), how much is her new regular rate of pay?

- a. \$50.20 b. \$16.55 c. \$13.05 d. \$12.59

17. John is calculating the width of some cabinets he wants to build. He needs a length of 2 feet 8 inches added to a length of 3 feet 6 inches. What is the total length he needs (adding the lengths together)

- a. 6ft 2in b. 19 inches
c. 5'14" d. 78 inches

18. The time is 09:40. Angela calls to say she will here in 1 hour and 35 minutes (1 hr 35min). What time will Angela arrive?

- a. 11:00 b. 13:00
c. 11:15 d. whenever she wants

19. If four equally priced pizzas plus \$10 worth of Coke costs \$44, how much does one pizza cost? (*Hint: Guess and Check or work backwards*)

Each pizza costs:

- a. \$8.50 b. \$11.00 c. \$13.50 d. \$54.45

20. The metric temperature unit is a degree on the Celsius scale ($^{\circ}\text{C}$). (*Celsius was a scientist; hence we capitalize the name of the unit of this measurement*). The formula to convert degrees Celsius ($^{\circ}\text{C}$) to the old degrees Fahrenheit ($^{\circ}\text{F}$) is: $F = \frac{9}{5} * C + 32$

If the temperature outside is 5°C then what is the temperature measured in the old $^{\circ}\text{F}$ temperature units?

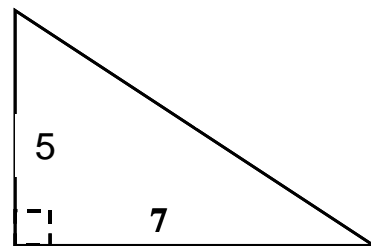
- a. 67°F b. 41°F c. 212°F d. 30°F

23. If there are three possible toppings for your pizza; how many different combinations of pizzas can you order if you select two different toppings

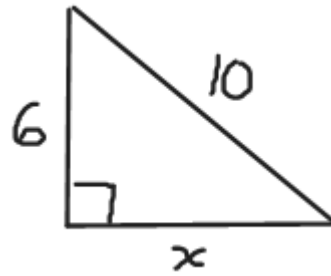
- a. 2 b. 3 c. 6 d. only one

4. Calculate the length of the unknown side:

3



5. Calculate the length of the unknown side



7. Complete the questions in following table:

a. 5 ft 4 in *subtract*
3 ft 8 in is:

b. three and a half
bunches of 6 bananas
is how many
bananas?

c. A two thirds
portion of 9 whole
strips of bacon is:

d.

$$\begin{array}{r} 2 \text{ hr } 55 \text{ min} \\ + 3 \text{ hr } 20 \text{ min} \\ \hline \end{array}$$

e.

$$\begin{array}{r} 6 \text{ hr } 15 \text{ min} \\ - 3 \text{ hr } 20 \text{ min} \\ \hline \end{array}$$

f.

$$\begin{array}{r} 6 \text{ lb } 7 \text{ oz} \\ + 4 \text{ lb } 8 \text{ oz} \\ \hline \end{array}$$

g.

$$\begin{array}{r} 5 \text{ yd } 2 \text{ ft } 8 \text{ in} \\ + 2 \text{ yd } 1 \text{ ft } 7 \text{ in} \\ \hline \end{array}$$

h.

$$\begin{array}{r} 5 \text{ yrs } 3 \text{ months} \\ + 3 \text{ yrs } 10 \text{ months} \\ \hline \end{array}$$