

GRADE 10 ESSENTIAL  
UNIT D – GEOMETRY  
PYTHAGOREAN THEOREM

MrF

SHOW WORK

Name: \_\_\_\_\_  
Date: \_\_\_\_\_

Why Do Adults Complain So Much?

Find the length of the hypotenuse of each right triangle below. Find your answer in the answer column. Write the letter of the answer in the box containing the number of the question.

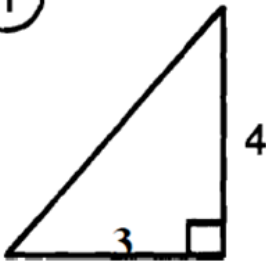
5	9	1	11	3	13	6	10	15	2	8	12	14	4	7
---	---	---	----	---	----	---	----	----	---	---	----	----	---	---



ANSWERS:

- (E)  $\sqrt{85} \approx 9.2$
- (D)  $\sqrt{562} \approx 23.7$
- (Y)  $\sqrt{169} = 13$
- (O)  $\sqrt{130} \approx 11.4$**
- (U)  $\sqrt{289} = 17$
- (T)  $\sqrt{225} = 15$
- (H)  $\sqrt{800} \approx 28.3$
- (E)  $\sqrt{25} = 5$
- (N)  $\sqrt{580} \approx 24.1$
- (R)  $\sqrt{2,500} = 50$
- (S)  $\sqrt{346} \approx 18.6$
- (P)  $\sqrt{89} \approx 9.4$
- (L)  $\sqrt{275} \approx 16.6$
- (G)  $\sqrt{65} \approx 8.1$
- (A)  $\sqrt{200} \approx 14.1$
- (R)  $\sqrt{269} \approx 16.4$
- (A)  $\sqrt{100} = 10$

1



2

$$c^2 = a^2 + b^2$$

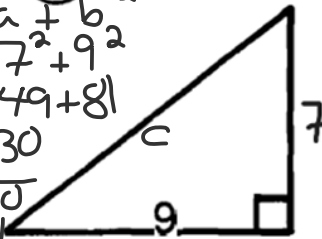
$$c^2 = 7^2 + 9^2$$

$$c^2 = 49 + 81$$

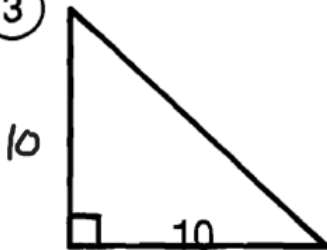
$$c^2 = 130$$

$$c = \sqrt{130}$$

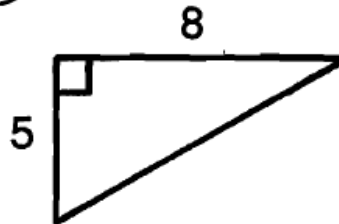
$$c \approx 11.4$$



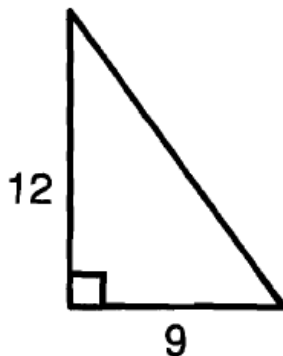
3



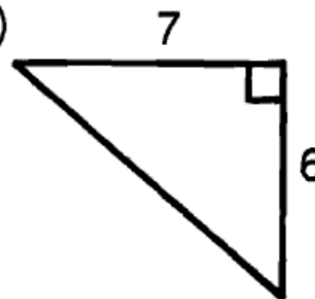
4



5



6



Do Puzzle Show work

