

**GRADE 10 ESSENTIAL
UNIT E – TRIGONOMETRY
CALCULATE SIDE OF TRIANGLE - PUZZLE**

Name: _____

Date: _____

Show work!

Who Turns Out the Lights on Halloween?

Cross out the letters above each correct answer. Then, *when you finish*, write the remaining letters in the spaces of the blank grid below.



SO 42.5 m	TH 22.5 ft	AC 20.6 m	AT 5.0 cm	EB 130.5 ft	EL 128.1 ft	ME 92.51	AB 19.0 ft	IG 4.7 cm	ET 16.1 mi	OO 298.57
HT 55.4 in.	OP 9.42	SW 20.3 mi	AY 24.4 mi	IN 5.62	QU 37.8 ft	IT 38.1 m	UP 17.1 ft	MU 52.0 in.	CH 95.32	ON 5.7 in.

--	--	--	--	--	--	--	--	--	--	--	--	--	--

In exercises 1-4, solve the equation. Round your solution to the nearest two decimal places (0.01).

① $\sin 22^\circ = \frac{x}{15}$

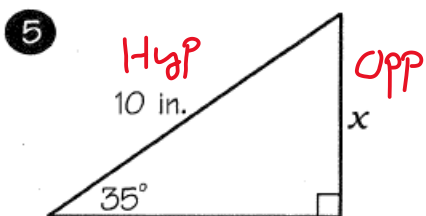
② $\tan 75^\circ = \frac{n}{80}$

③ $\sin 48^\circ = \frac{7}{a}$

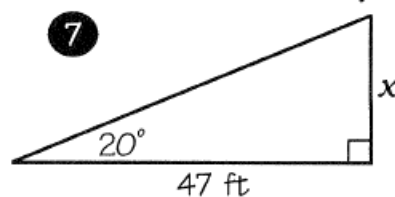
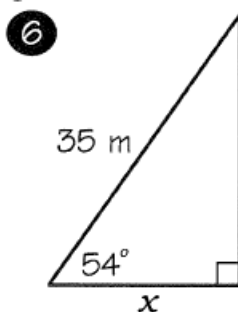
④ $\cos 6^\circ = \frac{92}{k}$

$x = 15 \cdot \sin 22$
 $x = 5.62$

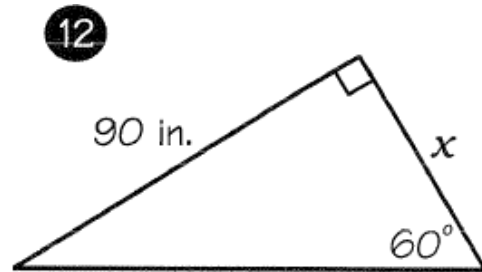
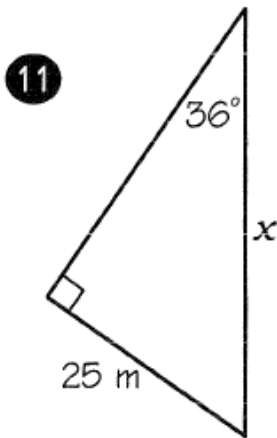
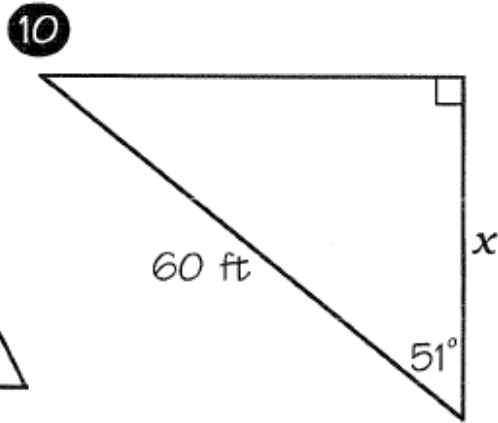
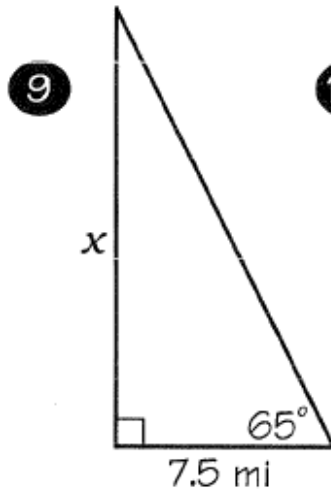
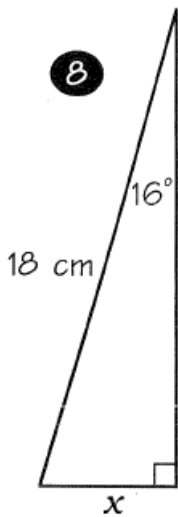
In exercises 5 -12, find the length of the side labeled x. Round to **one** decimal place.



$\sin(35) = \frac{x}{10}$
 $x = 10 \sin(35)$
 $x = 5.7 \text{ in}$

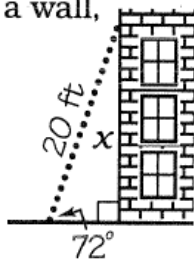


SOH CAH TOA

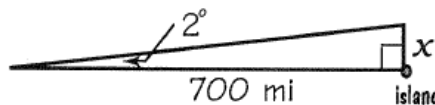


In Exercises 13-15, find the required length. Round to one decimal place.

- 13 When a 20-ft ladder is leaned against a wall, it makes a 72° angle with the ground. How high up on the wall does the ladder reach?



- 14 A ship is sailing toward a small island 700 mi away. If the ship is 2° off course, by how many miles will it miss the island?



- 15 A cable from the top of a 100-ft telephone tower makes a 50° angle with the ground. How long is the cable?

