

**GRADE 11 ESSENTIAL
UNIT G - TRIGONOMETRY
REVIEW OF PYTHAGOREAN THEOREM**

Name: _____
Date: _____

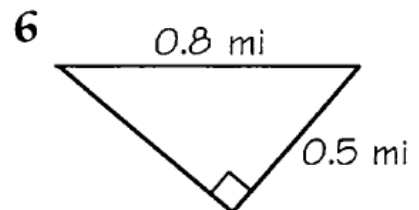
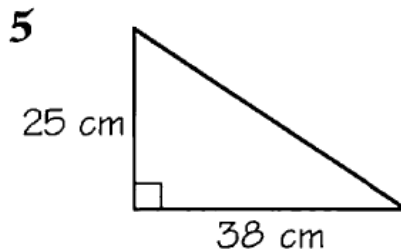
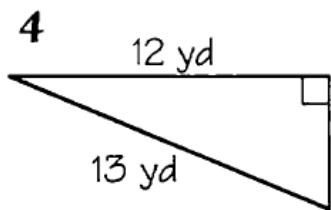
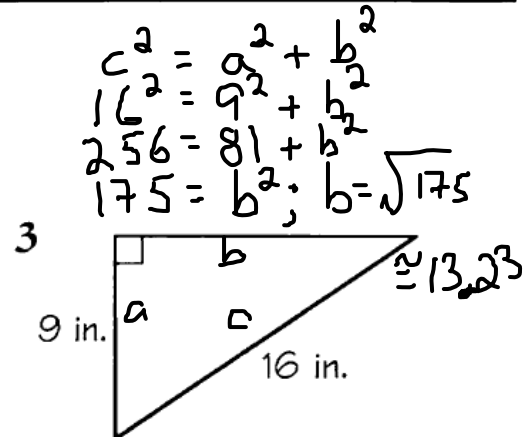
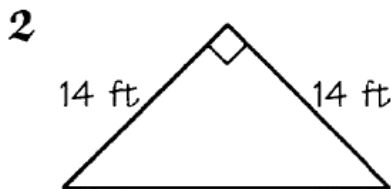
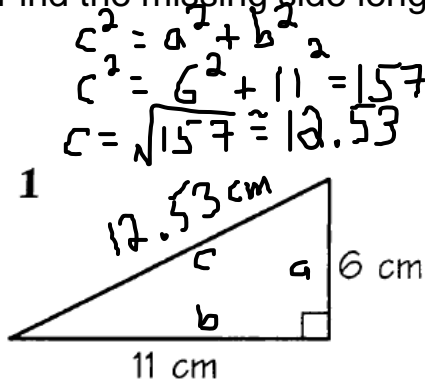
Did You Hear About . . .

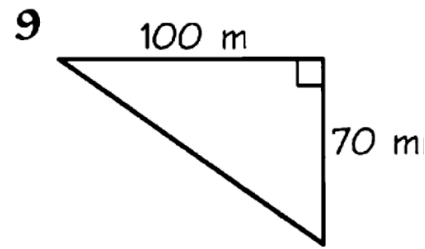
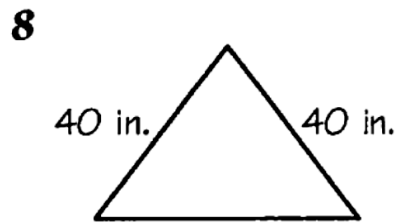
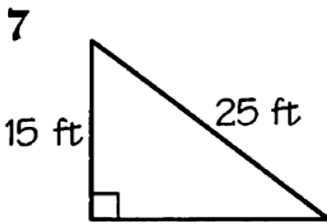
1 The	2	3 student	4	5	6	7
8	9	10	11	12	13	14 ?

Write the word next to each correct answer in the box that contains the exercise number (some answers are rounded).

not possible • CITY	121.5 m • COUNTING	7.8 cm • SQUARE	7 yd • FIGURE	19.8 ft • MATH	8.3 cm • NUMBER	16.6 ft • TAKING	45.5 cm • WALKED	56.5 in. • BECAUSE	122.1 m • BLOCK	13.2 in. • STUDENT	17.2 ft • PUTTING	20 ft • A	44.9 cm • TRIED	5000 ft • A	12.5 pm • THE	5 yd • WHO	6000 ft • BIGGER	0.7 mi • FROM	12 yd • ROUTE	55.1 in. • BY	0.6 mi • AROUND	12.9 in. • BOOK
---------------------	--------------------	-----------------	---------------	----------------	-----------------	------------------	------------------	--------------------	-----------------	--------------------	-------------------	-----------	-----------------	-------------	---------------	------------	------------------	---------------	---------------	---------------	-----------------	-----------------

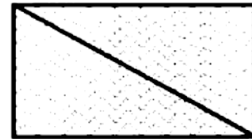
Find the missing side length, if possible.





Solve.

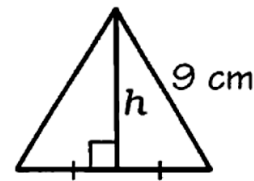
- 10** Mr. Smog just bought a big-screen TV set. The screen is 48 in. wide and 27 in. high. Find the length of its diagonal.



- 11** An 18-foot ladder is leaned against a wall. If the base of the ladder is 7 feet from the wall, how high up on the wall does the ladder reach?

- 12** Hulk left home and walked 8 blocks west. Then he turned and walked 6 blocks north. If each block is 500 ft long, how far is Hulk from home?

- 13** Each side of an equilateral triangle measures 9 cm. Find the height, h , of the triangle.



- 14** The lawn in front of Kermit Middle School is in the shape of a rectangle 30 yd long and 16 yd wide. How much shorter is your walk if you walk diagonally across the lawn rather than along two sides of it?