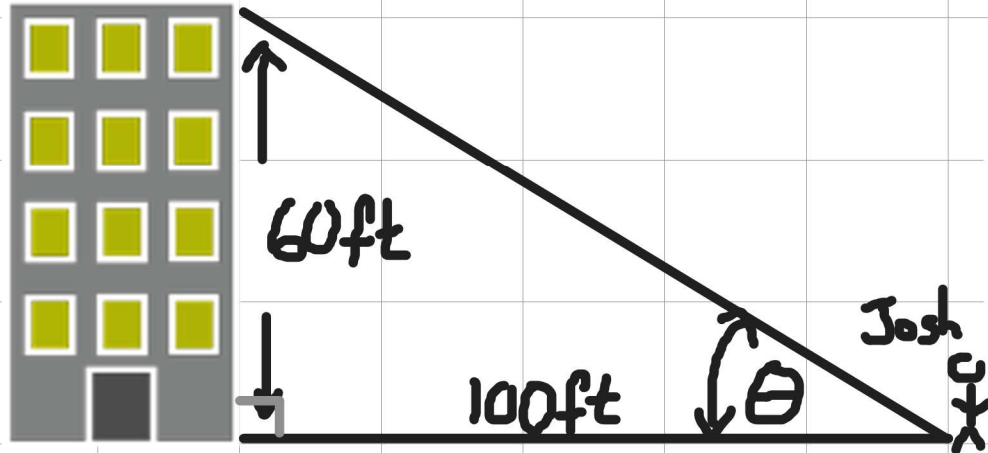


SOH CAH TOA

Warmup Gr11 Essential 27 Feb



Josh knows the height of the building and how far away he is from the the building. What is the angle of elevation of the building from where Josh is standing?

Find angle θ

* to scale.

Kendra needs to know the height of the tree!
She steps back 7 metres from the tree and measures the angle with her phone, or slurpee straw 'clinometer'. She masures an angle of 35.5 degrees.
How tall is the tree?

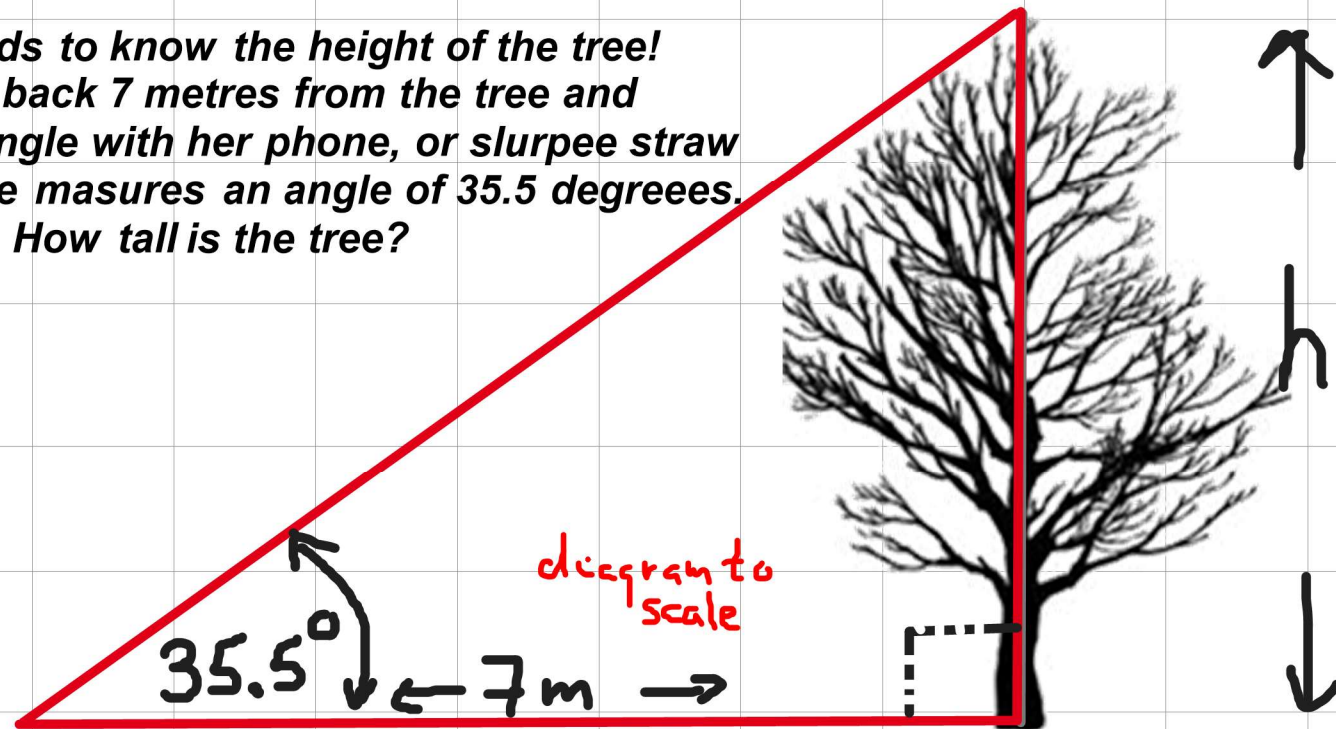
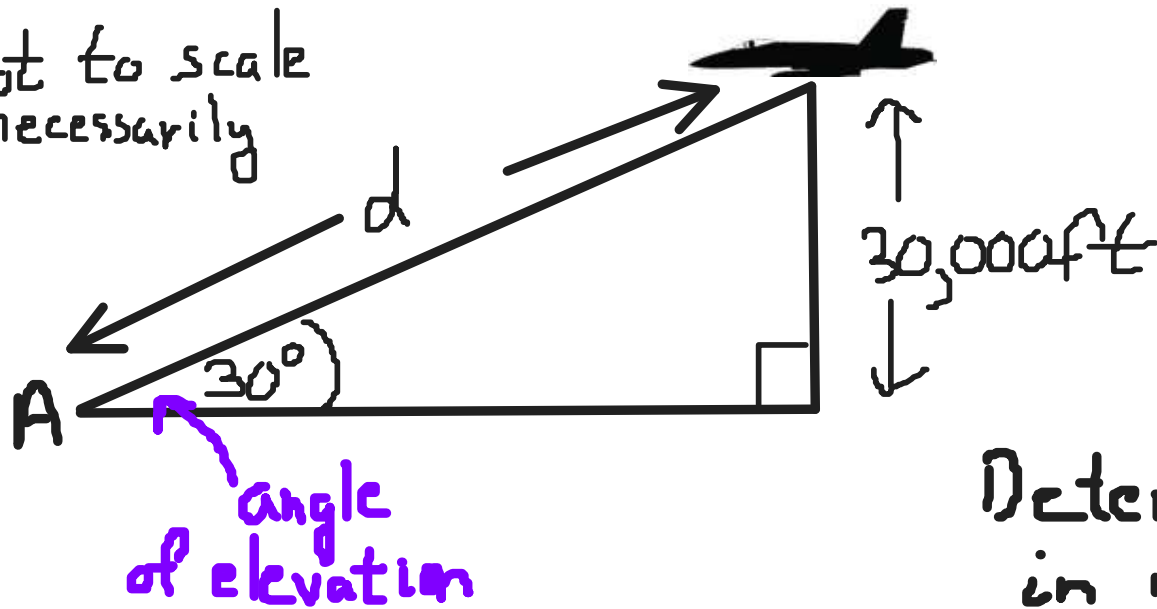
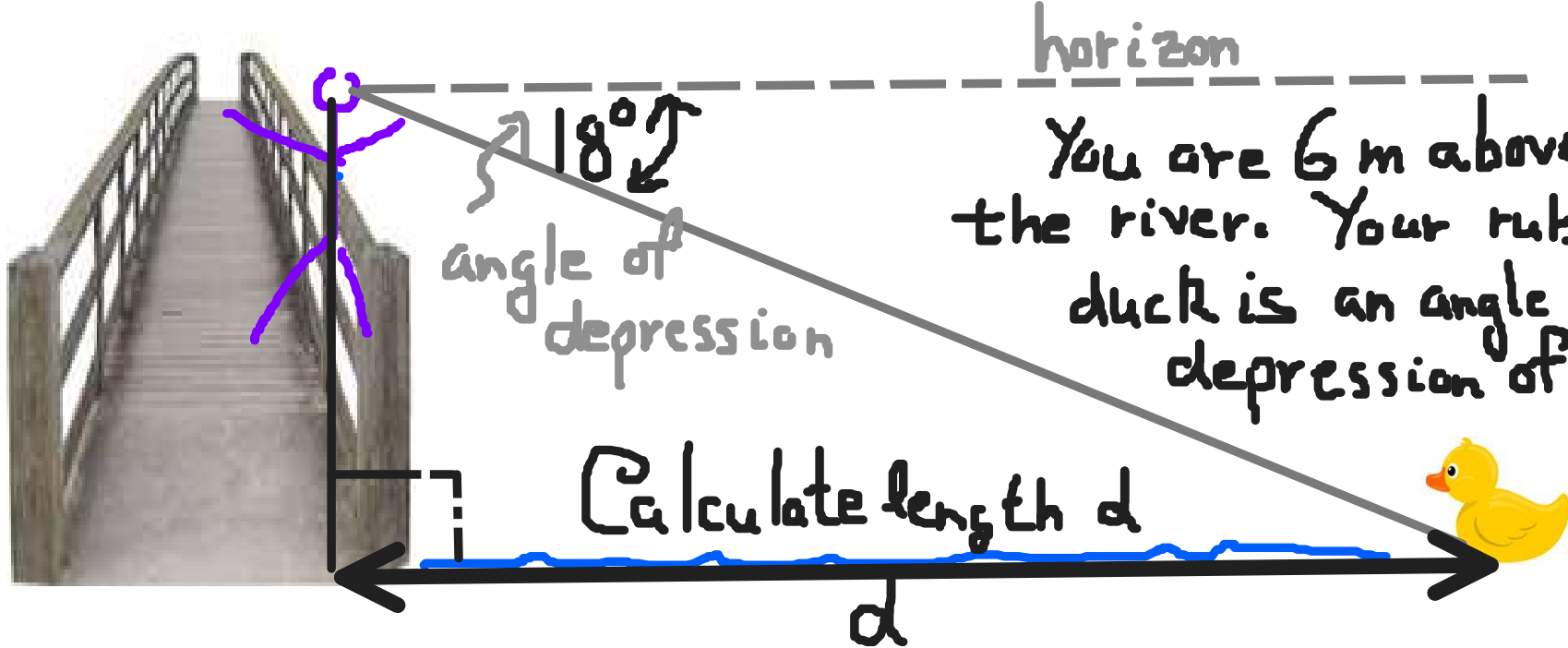


diagram to scale

*Not to scale necessarily



The fighter is 30,000 feet up. You measure angle A is 30° . Determine length 'd' in miles [1mi = 5280ft]



You are 6 m above the river. Your rubber duck is an angle of depression of 18°

Calculate length d